

Sentimental Analysis on News Topic Using Live Twitter Feed

¹Asif Iqbal Sirmulla, ²Prabhakar M

^{1,2}School of C& IT, Reva University Bangalore
¹asifsirmulla314.c@gmail.com, ²prabhakar.m@reva.edu.in

Article Info
Volume 83
Page Number: 4215-4220
Publication Issue:
May - June 2020

Article History
Article Received: 19 November 2019
Revised: 27 January 2020
Accepted: 24 February 2020
Publication: 12 May 2020

Abstract

Estimation assessment oversees perceiving and requesting sentiments or thoughts conveyed in source content. Electronic life is making a colossal proportion of presumption rich data as tweets, declarations, blog sections, etc. Feeling assessment of this customer created data is entirely important in knowing the appraisal of the gathering. Twitter end assessment is inconvenient stood out from general supposition examination as a result of the closeness of slang words and mistaken spellings. The most outrageous cutoff of characters that are allowed in Twitter is 140. Data base procedure and Machine learning approach are the two systems used for exploring estimations from the substance. Right now, endeavor to explore the twitter posts about electronic things like mobiles, workstations, etc using AI approach. By doing decision assessment in a specific zone, it is possible to recognize the effect of room information in suspicion portrayal. We present another segment vector for gathering the tweets as productive, opposite and concentrate social orders' decision about things.

Keywords: Social Orders, Tweet, Blog Sections, Machine Learning.

1. Introduction

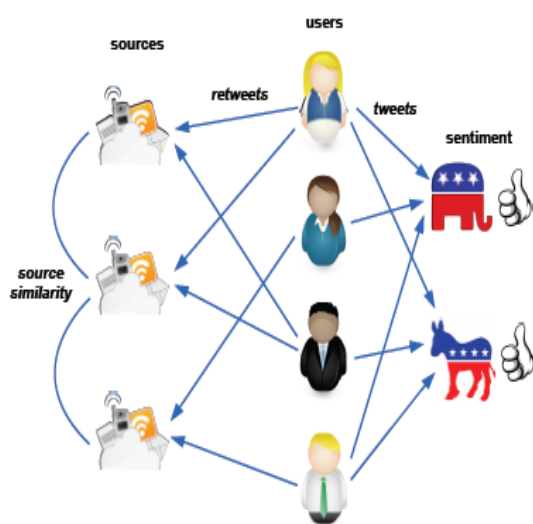


Figure 1: Proposed System

Slant examination is language preparing task that uses a computational way to deal with distinguish obstinate substance and arrange it as positive or negative. The unstructured literary information on the Web frequently

conveys articulation of assessments of clients. Notion investigation attempts to distinguish the declarations of conclusion and state of mind of authors. A straightforward supposition examination endeavors to arrange an archive as 'positive' or 'negative', in view of the sentiment communicated in it. The report level notion investigation issue is basically as follows: Given a lot of records D , a slant examination calculation characterizes each archived into one of the two classes, positive and negative. Positive name indicates that the record d communicates a positive conclusion and negative name implies that d communicates a negative assessment of the client. Increasingly advanced calculations attempt to distinguish the estimation at sentence-level, include level or substance level. (an) utilizing the affiliation rule based freely accessible library that gives positive, negative and nonpartisan scores for words. The new client driven Web has a gigantic volume of information made by different clients. The online life is as of now a huge bit of the Web. The bits of knowledge show that every four out of five customers on the Internet use some kind of online life. The customer duties to web-based life run from blog sections, tweets, studies and photo/video moves, etc. A lot of the information on the Web is unstructured substance. Suppositions bestowed in electronic life in kind of reviews or posts set up an

imperative and enchanting region worth assessment and misuse. With increase in transparency of opinion resource, for instance, twitter reviews, thing reviews, blog studies, relational association tweets twitter reviews help various customers in picking whether the twitter is worth watch or not. Right now have attempted to research another alliance rule based arrangement for both chronicle level and edge level inclination gathering. We have comparatively brainstormed another zone unequivocal heuristic for point of view level supposition social event of twitter audits. This plan finds the steady substance around the ideal point of view/highlight in an outline and systems its choice course. For a twitter, this is cultivated for all of the reviews. The inclination scores on a particular edge from all of the reviews are then totaled.

2. Related Work

Composing survey is the most critical development in programming improvement process. Before stirring up the instrument the basic to pick the factor of time, cost and companies quality. At the point when these things are satisfied, by then after stages are to make sense of which working structure and language can be used for working up the instrument. Exactly when the fashioners start assembling the device the item builds need some segment of outside help. This help can be gotten from senior specialists, from book or from areas. Before building the structure the above thought are considered for stirring up the proposed framework.

As a reaction to the developing accessibility of casual, obstinate writings like blog entries and item audit sites, a field of Sentiment Analysis has jumped up in the previous decade to address the question what do individuals feel about a specific theme. Bringing together specialists in software engineering, computational etymology, datamining, brain science, and even humanism, Sentiment Analysis extends the customary certainty based content examination to empower supposition arranged data systems. This paper is a diagram of Sentiment Analysis, its essential assignments and the most recent procedures created to address the difficulties of working with inwardly charged content.

The creating stream of substance set on the Web gives an epic variety of aesthetic assets. Individuals share their encounters on-line, ventilate their opinions (and disappointments), or basically talk for all intents and purposes anything. The huge extent of accessible information makes open portals for adjusted mining and assessment. The data we are enthused about this paper, is the techniques by which individuals feel about unequivocal themes. We consider it as a depiction task: their estimations can be certain, negative or impartial. An assessment isn't consistently imparted in an undeniable manner in the substance; it is routinely tended to in honest, complex ways. Other than direct clarification of the user's appraisals towards a specific subject, the individual being alluded to can utilize an alternate degree of different techniques to impart their feelings. In like

manner, writers may blend objective and one of a kind data about a point, or record thoughts about unforeseen subjects in contrast with the one we are exploring. Finally, the information collected from the World Wide Web a significant part of the time contains a ton of mayhem. The entire of this makes the errand of modified certification of the notion in on-line message continuously hazardous. We will give a design of different philosophy used to manage the issues in the space of thought evaluation, and consolidate our own exceptional section results.

3. Existing System

The unstructured printed data on the Web much of the time passes on verbalization of appraisals of customers. Feeling assessment endeavors to perceive the revelations of opinion and perspective of writers. A direct presumption assessment computation tries to portray a report as 'positive' or 'negative'. The new customer driven Web has an epic volume of data made by various customers. Clients are at present co-makers of web content, instead of being limited buyers. The electronic life straightforwardly a basic piece of the Web. An immense measure of the data on the Web is unstructured substance. Completions passed on in electronic structures association in sort of reviews or posts build up a gigantic and intriguing space worth evaluation and misuse. With increase in accessibility of supposition resource, for instance, twitter charts, thing reviews, blog considers, social association tweets,

4. Damages

- Assignment is to mine huge volume of works and devise reasonable figurings to get a handle on the assessment of others.
- This data is of enormous potential to affiliations which try to know the investigation about their things or associations.
- Traditional audit frameworks regularly endure adaptability, absence of security and proficiency issues.

5. Proposed System

Right now have attempted to research Association rule based arrangement for both area and twitter name thought request. The region request incorporates use of different district features. We have correspondingly brainstormed another locale unequivocal heuristic for point of view level supposition depiction of twitter surveys. This plan finds the settled substance around the ideal point of view/recall for a survey and systems its choice bearing. For a twitter, this is practiced for all of the studies. The estimation scores on a particular point of view from all of the reviews are then gathered. This strategy is finished for all points of view feasible. Finally a dense end profile of the twitter on all points of view is displayed in an easy to imagine and reasonable nuances of twitter overview subject to district and show the chart.

6. Points of interest

1. Adaptable.
2. More productive than conventional techniques.
3. More precision.

Non-utilitarian necessities

- Speed: The framework should process the offered pledge to yield inside fitting time.
- Ease of use: The thing ought to be direct. By then the clients can utilize effectively, so it doesn't require a lot of preparing time.
- Reliability: The pace of disappointments should be less then just the framework is logically dependable
- Portability: It ought to be anything but difficult to execute in any structure.

Explicit necessities.

- User Interfaces: The outside clients are the customers. The entirety of the customers can utilize this thing for mentioning and looking.
- Hardware Interfaces: The outside apparatus interface utilized for mentioning and looking is PCs of the customers. The PC's quality be PCs with remote LAN as the web affiliations gave will be remote.
- Software Interfaces: The Operating Systems can be any variety of Windows.
- Performance Requirements: The PC's utilized must be atleast Pentium 4 machines

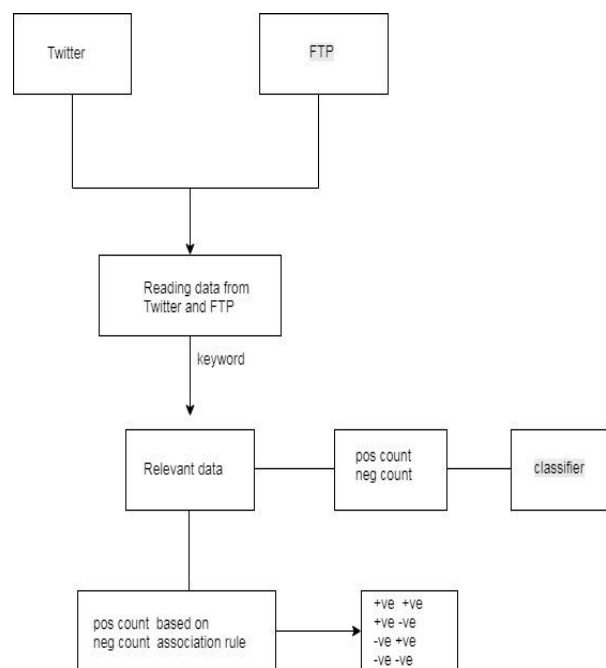
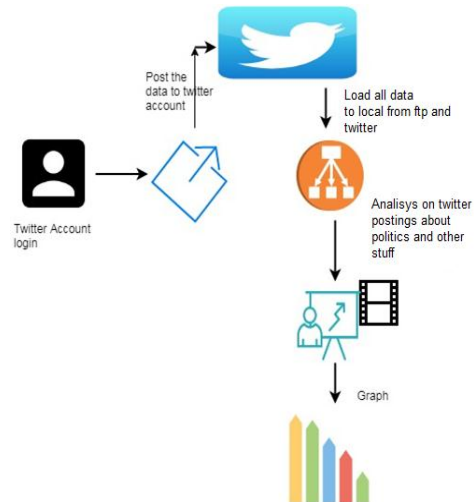
Programming essentials

Java 1.4 or higher
Java Swing – front end
Systems administration Socket programming
Windows 98 or higher-Operating System

Approach

The one of the major and significant period of the product improvement is the framework engineering .It consolidates the parts, conduct, sub modules, connection between sub modules and framework structure. For the most part the framework design contains relationship of modules and the sub modules. The entire engineering gives the outline of the each module and sub modules of the framework.

Framework engineering at first, the engineering contains the data with respect to the general task. The twitter it contains neighborly tweets and related data and named and unlabelled tweets.



Twitter:

Twitter is an online news and individual to individual correspondence organization where customer post and work together with messages, "tweets", restricted to 140 characters. Selected customers can post tweets, yet unregistered simply read them.



Making a twitter account:

First sort in web www.twitter.com.

Snap "Pursue Twitter."

Give essential data about yourself.

Pick your username.

Choose whether you generally need to be marked in to Twitter on the PC you're utilizing.

Snap "Make my record.

In the wake of finishing all the means can utilize twitter account .You can tweet the data identified with specific region. A Tweet is any message presented on Twitter which may contain photographs, recordings, interfaces and up to 140 characters of content. Snap or tap the Tweet catch to present the report on your profile.

Here in the venture we are putting away data identified with the governmental issues, business, e-trade.

FTP:

FTP is a contraction for File Transfer Protocol. FTP is used to move records between PCs on a framework. You can use FTP to exchange records between PC accounts, move reports between a record and a PC, or access web based programming annals.



How to Connect to an FTP Server

There are two ways to deal with enabling clients to associate with a FTP Server. The first is to cause it so anybody to can sign in namelessly, also called mysterious FTP, or you can appoint client names and passwords to individuals that they should use to sign in to the server.

The two most normal approaches to associate with a FTP server is with your Web Browser or with a FTP customer, for example, File Zilla. To interface with a FTP server with your program you would prefix the hostname you are associating with the ftp://convention proclamation. For instance, ftp://www.bleepingcomputer.com. It would then attempt to interface namelessly. On the off chance that the server you are attempting to associate with requires a username and secret phrase, you can do as such in the accompanying organization:

How to Transfer Files

Regardless of whether you are associated with a FTP server by means of your internet browser or a FTP customer, you will be given a rundown of organizers and

reports that have documents you can download to your PC. In the event that you are utilizing an internet browser, you will tap on the record you might want to download and it will provoke you to spare it or open it. Except if you truly comprehend what it is you are downloading, you should spare it to a catalog that you will realize how to discover later, and open it from that point.

In the event that you are utilizing a FTP Client, you will be exhibited a rundown of the records that you can download. You should initially determine where you might want downloads to spare to, and afterward you can double tap on the document to begin the download. At the point when you are finished downloading, you can close the FTP customer and open the record from where it was put away.

Here in the venture Sentimental investigation of twitter information the FTP records can contain any data can transferred by any of the client identified with the various fields. The FTP record may contain data identified with legislative issues, web based business, Business and so forth we are perusing the substance of a FTP document.

Examination of information:

In examination of information while we are perusing tweets from twitter identified with fields like governmental issues, web based business, business and we are perusing information from FTP. The examination of information contain the tweets contain positive tweet or negative tweet.

For instance the client present the tweet related on governmental issues implies.

Modi is acceptable however awful in organization. Here the tweet contains positive and negative worth the include will be expanded in positive and negative worth.

From the word reference need to check the whether the specific watchword present in the lexicon or not. The FTP record contain the data related.

Dispersing

In dispersing of information the related information acquiring from the tweets related information can contain data identified with the twitter and Ftp

Here in the dispersing of information the twitter can contain the tweets. The tweet can contain positive and positive tweet.

The tweet can contain positive and negative worth.

The tweet can contain negative and positive worth.

The tweet can contain negative and negative worth.

Investigation of Labeled with affiliation:

Meaning of affiliation rule:

Affiliation is an information mining limit that finds the likelihood of the co-event of things in a course of action. The relationship between co-happening things are conferred as coalition rules.

Affiliation rule learning is a standard based framework for finding charming relations between factors regarding colossal databases. It is depended upon to see solid checks found in databases utilizing two or three degrees of captivating quality.

Let be a lot of parallel traits called things.

Let this be a lot of exchanges called the database.

Each trade in has an amazing trade ID and contains a subset of the things in .

A standard is described as a consequences of the structure.

In a standard is characterized distinctly between a set and a solitary thing, for Every standard is made by two unique arrangements of things, otherwise called item sets.

To diagram the thoughts, we use somewhat model from the market space. The course of action of things is and in the table is shown a little database containing the things, where, in each entry, the value 1 techniques the closeness of the thing in the looking at trade, and the value 0 addresses the nonappearance of a thing in that trade.

A model guideline for the store could be implying that if spread and bread are purchased, clients additionally purchase milk.

Note: this model is pretty much nothing. In valuable applications, a standard needs an assistance of two or three hundred trades before it will in general be considered quantifiably basic and datasets routinely contain thousands or an immense number of trades.

Connection rules are commonly required to satisfy a customer decided least assistance and a customer demonstrated least assurance all the while. Connection rule age is ordinarily isolated into two separate advances:

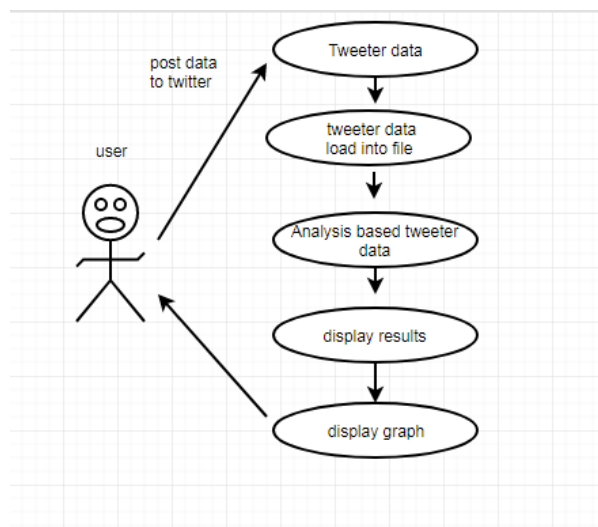
1. A least assistance limit is applied to find all progressive itemsets in a database.
2. A least certainty requirement is applied to these regular itemsets so as to shape rules.

While the ensuing improvement is quick, the hidden development needs more idea. Discovering all dynamic thing sets in a database is tricky since it fuses looking through all conceivable thing sets (thing mixes). The arrangement of conceivable thing sets is the force set over and has size (aside from the unfilled set which is unquestionably not a liberal thing set). Despite the manner in which that the size of the force set develops exponentially in the measure of things in, beneficial pursue is conceivable utilizing the sliding end property of help (in like way called enemy of monotonicity) which ensures that for a typical thing set, the entirety of its subsets are also endless and in like way no phenomenal itemed can be a subset of a tenacious thing set.

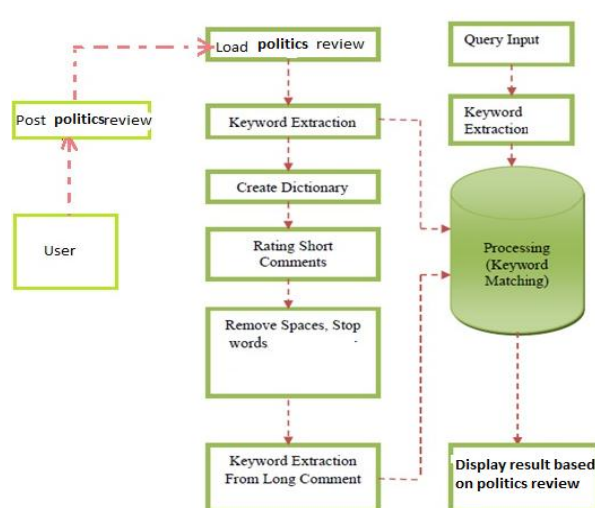
Here in the named information the significance of named information is information catchphrase effectively present in the word reference or not checking dependent

on the affiliation rule mining the tweets will order between the various classes.

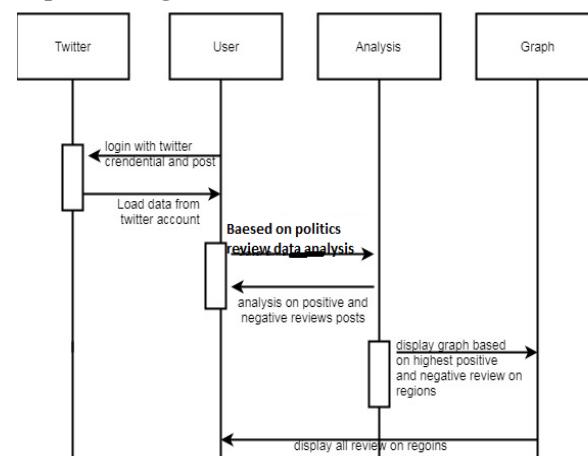
Analysis Reviews



Activity Diagram



Sequence diagram:



7. Results and Analysis

Username	Request Sent To	Status	Date & Time
Aravind	anil	Accepted	20/07/2016 12:31:03
anil	ashok	Accepted	20/07/2016 12:55:26
ashok	santhosh	Accepted	20/07/2016 13:10:04
ashok	Aravind	Accepted	20/07/2016 13:14:30
santhosh	Aravind	Accepted	20/07/2016 13:35:12
santhosh	anil	Accepted	20/07/2016 13:42:10
santhosh	arun	Accepted	20/07/2016 13:45:42
arun	Aravind	Accepted	20/07/2016 14:44:17
anil	arun	Accepted	21/07/2016 10:52:31
manju	Aravind	waiting	22/07/2016 10:00:45
manju	anil	waiting	22/07/2016 10:07:14
manju	arun	Accepted	22/07/2016 10:11:36
manju	arun	Accepted	22/07/2016 10:14:42
manju	santhosh	Accepted	22/07/2016 17:48:09
manju	ashok	Accepted	22/07/2016 17:50:20
manju	null	waiting	22/07/2016 17:50:20
arun	ashok	Accepted	22/07/2016 17:51:13
arun	null	waiting	22/07/2016 17:51:13
arun	ashok	Accepted	22/07/2016 17:55:38
shashi	Aravind	waiting	22/07/2016 18:00:23
shashi	santhosh	waiting	22/07/2016 18:00:54

All Tweets Details





Tweet Image	Tweet Name	Description	Date	Rank
	Le 2s	Le 2s with 16mp camera	22/07/2016 13:18:45	10
	HTC	HTC Desire 820	22/07/2016 13:19:15	12
	Macromax	micromax A10	22/07/2016 18:02:20	5
	Sony	Sony xperia	22/07/2016 18:02:45	2

Figure 11: All Tweets Results

8. Conclusion

We presume that utilizing distinctive NLTK classifier it is simpler to group the tweets and more we improve the preparation dataset more we can get exact outcomes. We anticipate utilize greater dataset to improve the precision, thinking about the feelings and internationalization.

References

- [1] Y. Mejova, "Sentiment analysis: An overview," Comprehensive exam paper, available on <http://www.cs.uiowa.edu/~ymejova/publications/CompsYelenaMejova.pdf> [2010-02-03], 2014.
- [2] E. Boiy, P. Hens, K. Deschacht, and M.-F. Moens, "Automatic sentiment analysis in on-line text," in Proceedings of the 11th International Conference on Electronic Publishing, pp.349–360, 2015.
- [3] P. D. Turney, "Thumbs up or thumbs down?: semantic orientation applied to unsupervised classification of reviews," in Proceedings of the 40th annual meeting on association for computational linguistics, pp. 417–424, Association for Computational Linguistics, 2015.
- [4] J. Kamps, M. Marx, R. J. Mokken, and M. De Rijke, "Using wordnet to measure semantic orientations of adjectives," 2012.
- [5] K. Dave, S. Lawrence& D. Pennock, "Mining the Peanut Gallery-Opinion Extraction and Semantic Classification of Product Reviews", Proceedings of the 12th International World Wide Web Conference, pp. 519-528, 2014.
- [6] P. Turney, "Thumbs up or thumbs down? Semantic orientation applied to unsupervised classification of reviews", Proceedings of ACL-02, 40th Annual Meeting of the Association for Computational Linguistics, pp. 417-424, Philadelphia, US, 2016.
- [7] A. Esuli & F. Sebastiani, "Determining the Semantic Orientation of terms through gloss analysis", Proceedings of CIKM-05, 14th ACM International Conference on Information and Knowledge Management, pp. 617-624, Bremen, DE, 2016.
- [8] B. Pang, L. Lee & S. Vaithyanathan, "Thumbs up? Sentiment classification using machine learning techniques", Proceedings of the Conference on Empirical Methods in Natural Language Processing, pp. 79-86, Philadelphia, US, 2015.
- [9] S.M. Kim & E. Hovy, "Determining sentiment of opinions", Proceedings of the COLING Conference, Geneva, 2016.
- [10] K.T. Durant & M.D. Smith, "Mining Sentiment Classification from Political Web Logs", Proceedings of WEBKDD'06, ACM, 2012.
- [11] F. Sebastiani, "Machine Learning in Automated Text Categorization", ACM Computing Surveys, 34(1): 1-47, 2002.
- [12] P. Turney & M.L. Littman, "Unsupervised Learning of Semantic Orientation from a Hundred-Billion-Word corpus", NRC Publications Archive, 2016.
- [13] P. Waila, Marisha, V.K. Singh & M.K. Singh, "Evaluating Machine Learning and Unsupervised Semantic Orientation Approaches for Sentiment Analysis of Textual Reviews", Proceedings of International Conference on Computational Intelligence and Computing Research, Coimbatore, India, Dec. 2012.
- [14] V. K. Singh, P. Waila, Marisha, R. Piryani& A. Uddin, "Sentiment Analysis of Textual Reviews: Evaluating Machine Learning, Unsupervised and SentiWordNet Approaches", In Proceedings of 5th International Conference of Knowledge and Smart Technologies, Burapha.