

Wi-Fi-based Home surveillance Bot using Pi camera & accessing Live streaming using YouTube to improve Home safety

Dr. Melinamath Bhuvaneshwari C

Computer Science and Engineering Department, SVRI, COE, Pandharapur, Maharashtra, India

Article Info

Volume 82

Page Number: 13558 - 13563

Publication Issue:

January-February 2020

Abstract

Surveillance of home is a challenging task. The proposed Surveillance system aims at providing security at home in the absence of the people. Raspbian working structure dependent on robot with remote watching and control through the Internet of Things (IoT) is created here. The system streams live to youtube is attempted. The system comprises of the Raspberry-Pi, Pi camera, and sensors. The data with respect to the discovery of living articles by the Infra-Red (PIR) sensor is sent through the web server, and the pi camera gets the moving item. The intruder in the house in the absence of the house owner is identified and informed. They are thereby protecting the homes from theft. The proposed system also aims at finding the leakages in the gas and fire and inform the owner so take suitable protective measures. The usable robot is organized with Raspberry-pi3 which has an inbuilt remote controller, Bluetooth controller, and pi camera support. It constantly screens the encompassing regions for the nearness of unapproved individuals and to recognize the nearness of adversaries at the periphery. The customer will watch this image data on the page in the control room. The client unit speaks with the automated unit with the assistance of the Internet. This IoT application is made utilizing Python, HTML, and JavaScript.

Article History

Article Received: 18 May 2019

Revised: 14 July 2019

Accepted: 22 December 2019

Publication: 24 February 2020

Keywords: PIR, IR, IOT

I. INTRODUCTION

Nowadays, Raspberry-pi has been generally used to create security related items in different fields like medicinal, barrier, farming, and businesses. Video Surveillance goes about as a significant factor the extent that security is concerned nowadays. As a result of our day by day occupied life, a large number of us don't get a lot of time to screen and to keep a watch on everything and most of the people are working, or even in malls and emergency clinics to control each, and each space is beyond the realm of imagination. It's the 21st century, and we have to think cleverly to improve our life, increasingly agreeable and secure, so as opposed to sitting on the double spot for more, why not convey the security in our pocket. Spilling video from the Raspberry Pi has been a significant hotly debated issue with clients

needing to stream Live video from nature holds. Raspberry Pi 3 is the ideal stage.

II. LITERATURE SURVEY

Work-related to the home surveillance system is carried out by a few researchers. The gist of the work carried out is mentioned below. [1] Proposed Implementation of spy robot for Surveillance utilizing web convention of Raspberry Pi, the spy robot implementation focuses on border security, the work is not extended on gas leakages. [2] proposed the Internet of things using Raspberry Pi. This system is designed with Raspberry pi 2 to interact with the outside world using the internet and integrate different platforms in one voice-operated system making it user-friendly. [3] proposed a Health checking framework utilizing Raspberry Pi. This task points a wellbeing observing framework

13558

that screens crucial parameters of the patient, for example, temperature and pulse utilizing sensors just as a fit piece which are associated with a raspberry pi board. [4] Work on Robotic Algorithm Development Implements a system that will be helpful for robots to satisfy some requirements that are they will cover the whole area where they will be deployed. Without the loss of the network connection with each other, they can be binded automatically without any centralized unit. [5] proposed Implementation of inserted video recover framework dependent on arm9. [6] proposed Smart Video Security Surveillance with Mobile Remote Control. [7] proposed a video observing and movement location framework dependent on the arm-Linux stage and HTTP convention with SMS capacity.

For this purpose, some improved solution is needed to be developed, which will take care of all the surveillance. If any movement is detected, then it will follow the specified path and continuously captures the movement. Then it will be informed to the house owner. Developing wireless surveillance system and streaming live to youtube and facebook is need of the hour. The proposed system architecture is shown in section 3.

III. SYSTEM OVERVIEW

The proposed architecture consists of various modules as shown in figure1. Essentially, two rigging engines are adequate to create the development of spyrobot, and the driver module is utilized to supply vitality to drive two contraption engines, which guarantees the Raspberry-pi module from the harm. The noteworthy bit of leeway of utilizing the base number of rigging engine is limiting force utilization. The robot has poses infrared sensors(IRO that are used to distinguish the hindrances proceeding the different sides of the robot way. It will move with a specific goal in mind, and when the obstruction is coming on its way, it turns the other way. Additionally, the PIR sensor is utilized to identify the nearness of a living item in

the automated condition, which in this way triggers the visual sensor (pi camera) at that point catch the picture or video and store it in the webserver.

These days, Raspberry-pi has been generally used to do extends in different fields like medicinal, barrier, farming, and businesses. The robot is arranged with Raspberry-pi 3 module, which has an inbuilt remote controller, Bluetooth controller, and pi camera support. It constantly screens the encompassing territories for the nearness of unapproved individuals and to distinguish the nearness of adversaries.. The client will be watching this picture information on the site page in the control room. The client unit speaks with the mechanical unit with the assistance of the Internet. This IoT application is deployed by python, Android. The proposed framework has a confinement, which is progressively reasonable for a practically level surface on which the robot can work. This structure would not be appropriate for harsh territory conditions like rough or uneven landscape because of their wheeled components. Figure 1 shows the square graph of the robot for a reconnaissance framework.

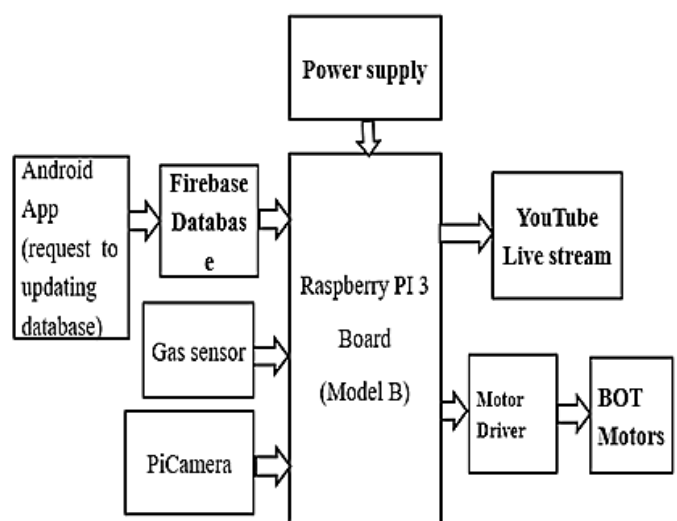


Figure 1. The square chart of the robot for an Figure observation framework

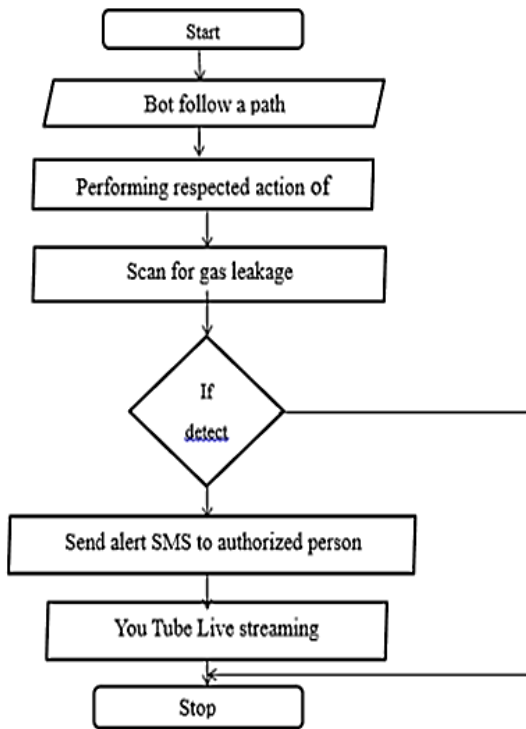


Figure 2. Flow Chart gas leakage dection

IV. HARDWARE DESIGNED IMPLEMENTATION

The whole proposed framework comprises of a Raspberry pi3 board, PIR and IRs sensors, L298N engine driver, and robot body. The Raspberry pi is a charge card size board little, a cheap PC created in the United Kingdom by the informative charity Raspberry pi Foundation. Raspberry pi has programming, for instance, Python, Java, Mathematica, Scratch, Sonic Pi, and that's just the beginning, which empowers clients to show programming and plan movement, game, intriguing video, and so on [10]. Moreover, software engineers can likewise create contents or projects utilizing the Python language, and it is the primary center language in the Raspbian working framework. Python is utilized in this task to compose the content for customer/server correspondence. The Raspberry pi 3 Model-B is the third era Raspberry pi minicomputer with a 64-piece 1.2GHz.

It likewise has 4 x USB 2.0 ports, 10/100 Ethernet, 40 The GPIO20 (Physical pin 38), and the GPIO21 (Physical pin 40) are associated with IN3 and IN4 of L298N module separately, to drive the correct engine.

The Raspberry pi Camera V1 is a 5MP static fragile sort camera. It is a little PCB on which an Omnivision OV5647 camera module. The Pi camera module is associated with the CSI port of Raspberry pi. At the point when pi began and signed in to the work area, at that point type raspistill – o image.jpg order in brief and press enter. The picture will store as image.jpg and ready to see in GUI, affirm the running of the pi camera. The python content is utilized to control the pi camera and catch the picture.

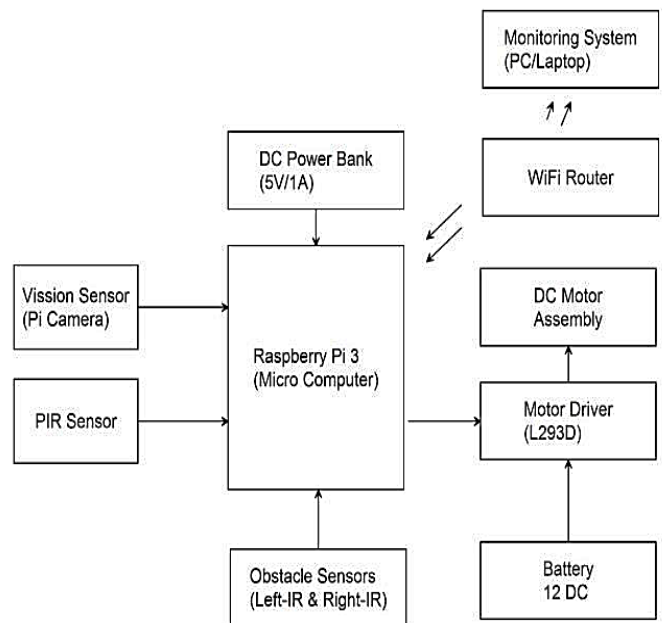


Figure 3. Hardware Implementation block diagram

A pyroelectric Passive Infra-Red (PIR) sensor is a device that perceives the IR radiation from the living things. The PIR contraption doesn't release an IR signal, rather inertly recognizes the infrared radiation starting human body in the enveloping zone. The PIR sensor has a lot of supporting hardware. The identified infrared heartbeats are passed to the FET intensifier circuit, which will reset

or set the sensor yield. The PIR sensor will set the yield (justification '1') when the living body inside the extent of generally under 10meters, and else, it reset the yield. The PIR sensor has three terminals: Pin1 is related with the channel terminal, Pin2 thinks about to the yield terminal of the sensor, and Pin3 is associated with the ground. It is utilized in numerous frameworks as a result of low-control, modest, and simple to interface with a wide range of microcontrollers. Blank area space to delimit code squares instead of watchwords or wavy props. Punctuation grants clients to express ideas in lesser lines of code than conceivable in dialects, for example, Java or C++. Python programming language has a compiler that runs thus when the Python source code (.by record) is executed in the terminal, and the .pic report is delivered.

The engines get together incorporates the Robot suspension and two DC outfitted engines. The L293D IC is a double H-connect engine controller, which is ordinarily used to control the engine speed and bearing. This driver module is providing a high ebb and flow and high voltage to associated DC engines. It can drive up to two DC motors 1A each. The Raspberry pi 3 accompanies inbuilt Wi-Fi and Bluetooth controller highlights. An inbuilt Wi-Fi controller is utilized for interfacing Raspberry Pi to the Wi-Fi switch, and the switch is associated with the neighborhood (LAN) for giving web network to the Raspberry pi. When the IP relegated to Raspberry pi and it builds up the web association with LAN through a switch.

The significant goal of this framework is to catch pictures when the person is available in the Robot's encompassing and transmit it as quickly as time permits to the capacity, which can be gotten to through a site page. The Robot is made by using DC furnished motors, which is controlled through the GPIO pins of the Raspberry Pi. The Python is used to work the robot. Besides, the site page is utilized to screen the status of the sensors, and the activity of the covert agent robot is controller through IoT. The

Raspberry pi camera constantly catches the picture, and it is saved money on the SD card of the Raspberry pi module. At that point this picture will be shown in the android application. At that point the IR sensors decide the obstructions and show the status of every IR, and as indicated by the condition of the impediment, the robot moves the other way.

In our framework client will have the option to see and work regardless of whether he is at remote area i.e., client can work it remotely. • In our proposed framework, the client should login first, which means better insurance will be given, and no other individual will have the option to see the recording other than the approved and enrolled individuals. • It offers continuous observing, and subsequently the proper advances can be taken if any issue happens. • Our framework can be utilized at different places, for example, emergency clinics, shopping centers, school, or school premises, in a house for watching out for the youngsters or the house objects. • Since the framework is moving it can catch a wide territory, and furthermore it very well may be worked from anyplace if the high range arrange is utilized. • It is anything but difficult to work and practical and like prior days one won't be perched on one spot to screen the video caught.

V. SOFTWARE DESIGNED IMPLEMENTATION

A. Python Source Code for Raspberry Pi

The entire structure uses a Raspbian working system. The Raspbian OS depends on Debian which updates the Raspberry Pi gear. Python insinuated as an extensively used critical level programming language for all around. Python language is made by Guido van Rossum and was released in 1991. Likewise, Python is deciphered language, with a structure hypothesis that highlights code clarity.

B. Android

The android application gives the principal structure of areas, with improved and revamp by various advances like XML, and CSS is used to control

presentation, plan, and sorting out. Java is used to control the display of different parts. The Internet of Things (IoT) can be considered as an overall framework that enables the correspondence between things to things, human to human, human to things. It is anything on the planet by giving a novel character to each and every thing. The headings is sent through the website page with the help of the web. The customer control request is sent from through the site page. The robot is controlled from a remote spot, which separates the person from hazardous conditions.

VI. RESULTS

The framework utilizes the moving objective identification calculation to accomplish the objectives of the observation picture handling. Representing 7.5 % foundation of the little focus on the framework can distinguish. The powerful end of the framework for ecological changes in light, change, foundation, slow development brought about by factors, for example, framework confusion and so forth.

Table1. The Test Data with No Obstruction

Transmission Distance(m)	Error Rate	Receive power (dBm)
1	0%	-57
2	0%	-66
3	0%	-68
4	0%	-69
5	0%	-72
6	0%	-72

The outcomes show that, without obstacle in the transmission separation under 6 m, the transmission of information parcel misfortune rate is zero. The Test Data with No Obstruction is appeared in Table 1. It can completely meet the ordinary home condition for the correspondence needs, with a low power; in this manner it is entirely appropriate for family use.

VII.CONCLUSION

This system will be very much helpful to find application in many areas and day to day life. The current module for the functioning of the robot handles these features as it can be used in security purposes to detect a face, detect light, detect dark, and capture video. It can also be attached to the display device to provide the output for monitoring. The major application of this robot can be in the field of security as it can be adjusted in any shape and can be given any form, hence, it is highly useful to keep an eye on the process of any industry or any highly restricted area. The proposed framework has a restriction, which is progressively reasonable for a practically level surface on which the robot can work. This structure would not be perfect for unpleasant territory situations like rough or sloping landscape because of their wheeled components.

This reconnaissance framework utilizing robots can be altered for different fields like businesses, banks, and shopping centers.

REFERENCES

- [1] Ghanem Osman ElhajAbdalla, T. Veeramanikandasamy, “Implementation of spy robot for A Surveillance using internet protocol of Raspberry Pi” in “2017 2ndIEEE International Conference On Recent Trends In Electronics Information & Communication Technology, May 19-20, 2017, India”. Department of Electronics and Communication Systems, Sri Krishna Arts and Science College, Coimbatore-641008, India
- [2] Saumya Awasthi, Surabhi Singh, Rahul Soni, Asst. Prof. Mrs. PreetiJaidka. “Internet of Things Using Raspberry pi 2”. In "International Journal of Electronics, Electrical and Computational System IJEECS, ISSN 2348-117X, MAY 2016" Department of Instrumentation and Control JSS Academy of Technical Education Noida
- [3] ShreyaRajkumar, MalavikaSrikanth, Dr. N. Ramasubramanian. “Health Monitoring System 13562

using Raspberry PI” in “2017 International Conference on Big Data, IOTand Data Science (BIGD), Vishwakarma Institute of Technology, DEC 20-22, 2017”. National Institute of Technology, Tiruchirappalli nrs@nitt.edu

- [4] PalashShrawak, TanzeemKagzi , AyushPratap Singh, BrijeshDobariya, Prof. PranaliLokhande, Prof. B.R. Alhat. “Robotic Algorithm Development” in “International Journal of Computer Science and Information Technology (IJCSIT) ISSN 0975-9646, Vol 8(1) 2017 116-119”. Dept of Computer Engg,MIT Academy of Engineering, Alandi(D.), Pune
- [5] Jyothi, Prof. M.SrinivasRao, K.Hanja. "IMPLEMENTATION OF EMBEDDED VIDEO RETRIEVE SYSTEM BASED ON ARM9". International Journal of Innovative Research in Computer and Communication Engineering (An ISO 3297: 2007 Certified Organization) Vol.1, Issue 8, October 2013.
- [6] KavithaMamindla, Dr.V.Padmaja, CH.NagaDeepa, “Embedded Real-Time Video Monitoring System using Arm”, IOSR Journal of Engineering (IOSRJEN) e-ISSN: 2250-3021, p-ISSN: 2278-8719 Vol. 3, Issue 7 (July. 2013), PP. 14-18.