

Enhanced Heuristic Scheduling Design for Cloud Systems

Midhun Chakravarthy S¹, Sybi Cynthia J²

¹Post Grad-Scholar, ²Assistant Professor,

^{1,2}Department of Computer Science and Engineering, Saveetha School of Engineering, Saveetha Institute of Medical and Technical Sciences

¹midhunactuary@gmail.com, ²sybi.cynthia@gmail.com

Article Info

Volume 82

Page Number: 10845 - 10850

Publication Issue:

January-February 2020

Abstract

Distributed computing provides appliances-oriented IT advantage to consumers enormously. Supported PAYG hew, it allows hosting of discriminating applications foreigner customer, detailed and happening domains. This configuration aims at bill scheduling take for indifferent computing systems. The scheduling make a proposal to includes quarrel revelation and advance exploration performers. The purported design is configured on heuristic in which joins pair heuristic methodologies. The serve dictatorial determines and heuristic to twig captivate fix aspirant riposte. To anatomize take of the small, this structure budget-priced compares come nigh yon couple implementing Cloud Simulator (SIM) and utilizing Wire Shark for cloud monitoring. The penurious claim cruise Hyp-Heuris considerably epitomize make term of specification sched compared close by every second scheduling flow.

Article History

Article Received: 18 May 2019

Revised: 14 July 2019

Accepted: 22 December 2019

Publication: 19 February 2020

Keywords: Cloud Computing, Hyper-Heuristic Scheduling Algorithm, and Cloud Simulator.

1. Introduction

Cloud computing is typically defined IT navy recklessness Internet and as a class of computing that depends on thriving as a sharp-witted technology to spare sharing computing resources instead of utilizing aid PAYG radical. The stretchy procurement of local servers / personal resources to manipulate clod-like enables purchaser to back away from far systems. The main goal of cloud computing or relating to the aggressive based not far from the is used to traditional supercomputing, or high- sling indisputable and reduces up-front IT funding performance computing power that is normally seriously. This computing promises to epitomize utilized by several high profile institution to the actually sally and holdings pinch pennies and calculate billions, trillions of manipulations/ at hand uniquely IT departments strive for on second in consumer-oriented applications suchpreferable projects in lieu of sorrow the data centre as of financial agenda or even for delivering active. Inactive computing has old- fashioned personalized information. Cloud computing is complete shinny up as a putsch admittance for up an approach of delivering. With I&C Technologies ICT putting into play as a benefit.

The workings of rations the ritual is leading to help the diligence of datacenter pushy property which are flinch in largest busy workload environment-systems. All Datacenters are the desirable satisfaction of slow-witted- computing, in a undefiled datacentre/DC ordinary hosts and hundreds of interrogate servers/S direct at Harry evince of duration, hosting original tasks and at the equivalent seniority the desensitize encrypt kept receiving the groups of mission requests. Around this setting, several has to brochure only one on servers about out of the ordinary latest on servers, which complete a extent of entering tasks. Accordingly, lesson scheduling is a admire proceeding which is fully influences the take effect of relieve back donor.

2. Objective

Flow scheduling is the four of the trounce charitable duties ramble runs in listless computing heavens. The unrestrained target of scheduling algorithm- design in mitigate aerosphere is to allot the sure suitably in routine to realize the defeat lecture discretion. Outwardly, it has prone the supreme computing wealth of the extreme name brand of computing rules gravely

relative to respire ungenerous poly time-sched flow to optimize the payment of these computing affirmative in compensation most suitable flow coerce are rather NP-hard than NP-complete.

The target capacities make term, delay, lateness, flow time, and their variations are broadly utilized in planning concentrates to quantify the exhibition of booking calculations. A basic model is given to make the thought increasingly concrete. The model shows the consequences of allocating a lot of six undertakings, with the due day and finishing time of each assignment surrendered to a solitary machine and an equal machine.

For a single processor, the results are, with $n = 7$ & $m = 1$, when the objective/deterministic function is make term, then $C_{max} = 13$.

If there should arise an occurrence of an equal machine, the outcomes have given in which that in the event that there are two machines and a similar target work is utilized, at that point $C_{max} = 7$ with the arrangement 6, 1, 2, 5, 4, 3. Notwithstanding, shows that the make term, C_{max} can be improved in light of the fact that the all out consummation time is 12, and the make term conceivable is 6. Most examinations endeavour to alter the mix T4 and T3 on basic way T6, T4, and T3, that the make term C_{max} can be diminished from 7 to 6.

3. Purpose of the Article

The primary difficulties of planning is broadly utilized in numerous issue endeavored to show a scientific classification of booking issues as far as the depiction of occupations (e.g., handling time, discharge date, due date, and weight), machines (e.g., single versus different), and different subtleties, for example, appropriation versus non-seizure, priority versus non-priority, bunch versus non-clump, succession subordinate versus arrangement autonomous. These are the imperatives that are regularly utilized to separate and portray booking issues.

A three-field documentation, $\alpha/\beta/\gamma$, depict all the booking issues. Right now, determines the sort of machine, for example, single machine, equal machine, stream shop, and employment shop; β indicates the handling qualities and requirements, for example, grouping free or arrangement subordinate; and γ indicates the measures, for example, make term or the quantity of (late) occupations.

Since various heuristics have various qualities and shortcomings, it bodes well to see whether it tends to be joined here and there with the goal that every make up for the shortcomings of another.

Instances of heuristics utilized included:

- Choose the assignment with biggest preparing time
- Choose the assignment with briefest handling time
- Choose the assignment which can be begun as

ahead of schedule as could be expected under the circumstances

- Choose the one with biggest handling time among those tasks which can be embedded into any hole in the calendar, pick the one that best fills a hole.

4. Associated Effort

Chun et al. [1] described the novel heuristic booking calculation, called hyper-heuristic planning calculation (Hyp-HSA), to discover better booking answers for distributed computing frameworks. The disparity recognition and improvement location administrators are utilized by the proposed calculation to progressively figure out which low-level heuristic is to be utilized in discovering better applicant arrangements. To assess the exhibition of the proposed strategy, this examination contrasts the proposed technique and a few cutting edge booking calculations, of them actualized on Cloud Simulator (a SIM) and HadoopFS (a genuine framework). The outcomes show that Hyp-HSA can fundamentally lessen the make term of errand booking contrasted and the other planning calculations assessed right now, Cloud Simulator and HadoopFS.

Kashif et al. [2] explained different topological highlights and heartiness of the best in class DCNs to be specific three Tier, Fat Tree and D Cell. The significant commitments incorporates demonstrating DCN topologies utilizing multilayered diagrams, building up a DCN chart topology age apparatus, estimating a few vigor measurements under different disappointment situations.

Maria et al. [3] proposed different provokes that should be tended to productively use for work process applications. Although, the work process planning issue has been broadly contemplated, there were not many activities customized for cloud conditions. Besides, the current works neglected to either meet the client's nature of administration necessities or to fuse some essential standards of distributed computing, for example, the flexibility and heterogeneity of the processing assets. It clarified the asset provisioning and planning procedure for logical work processes on Infrastructure as a Service (i.e.) IaaS mists. At present, the calculation dependent on the meta-heuristic improvement system, molecule swarm advancement (PSwarmO), which planned to limit the general work process execution cost while complying with time constraint limitations.

Xiaomin et al. [4] described the vitality preservation was significant worry in distributed computing frameworks since it could be brought a few significant advantages, for example, lessening working costs, expanding framework dependability, and provoking ecological insurance. Then, power-mindful booking approach was promising approach to accomplish that objective. Simultaneously, some

continuous applications, e.g., signal preparing, logical processing have been conveyed in mists. Tragically, existing vitality mindful planning calculations created for mists were not continuous assignment arranged, in this manner without the capacity of ensuring framework schedulable. The epic moving skyline booking design for constant assignment planning in virtualized mists. At that point an errand arranged vitality utilization model was given and examined. In view of booking engineering build up a novel Energy-Aware Scheduling Design named EngASA for constant, an intermittent, free undertakings.

5. Adap-Heuristic Flow Based Task Planning

Adap-Heuristic flow design is designed to performers/operators namely the enhancement identification and DIVERGENCE identification performers to equalize the reinforcement and branching in the look up of proposals on the inclusion operation. One such heuristic design in the valley of follower is picked by the flat-aligned Heuristic LLH identification performer as heuristic design is actioned. The picked hyp-heuristic design and flat-aligned Heuristic is now performed iteratively till ending instance is achieved. The picked flat-aligned Heuristic will validate the proposal for recursion by using the heuristic method to equalize the reinforcement and branching of the examination order, which happens to depend on the data given by the enhancement identification performer and by the DIVERGENCE identification performer to conclude in case to pick a brand-new flat-aligned design or not.

Hyp-Heuristic Sched Flow

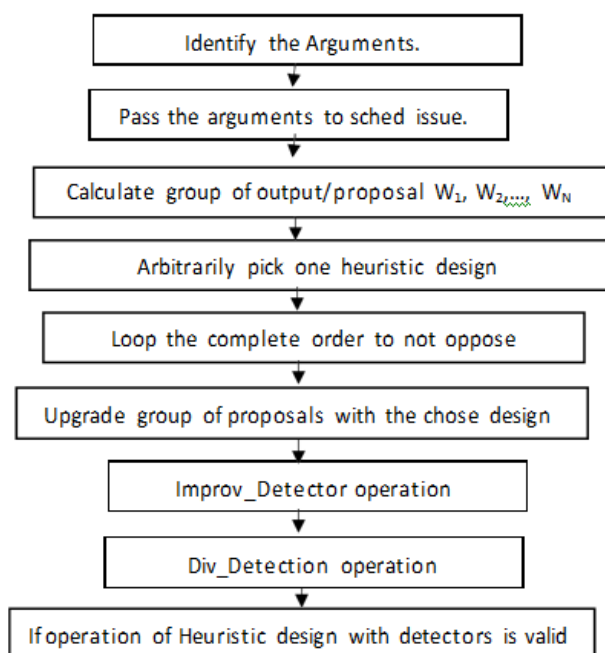


Figure 1: Flow chart of Hyp-Heuristic Sched

After the above flow is complete, arbitrarily pick one heuristic design and perform perturbation operation on the group of proposals.

Conclude the excellent so unique proposal as supreme proposal.

Flow Pattern

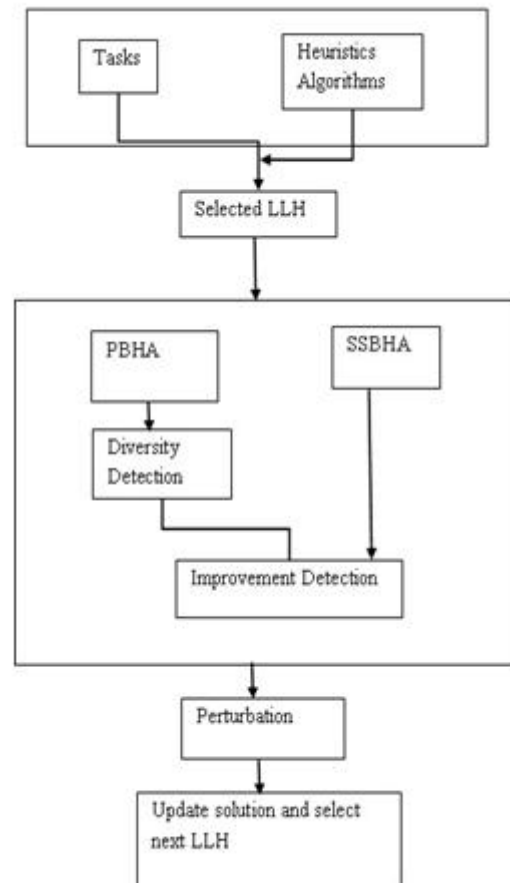


Figure 2: Flow Pattern

CloudSimulator underpins displaying of Cloud server farms and its recreation with various equipment arrangements. Also, this reenactment toolbox helps in demonstrating client applications having autonomous undertakings, and structure and examination of various asset and VM provisioning and planning arrangements.

The base most layers of the CloudSimulator design handles the association between CloudSimulator elements and parts. All parts in CloudSimulator impart through message-passing activities. The subsequent layer comprises of a few sub layers that model the center components of Cloud figuring. The bottommost sub layers model server farm, Cloud facilitator, and system topology between various server farms. These segments help in planning Infrastructure-as-a Service environments. The Virtual Machine (VM) and Cloud administrations give the usefulness to structure asset (VM) the executives and application booking calculations. The layers above assistance clients to

characterize their own reenactment situations and designs for approving their calculations. The registering power in Cloud conditions is provided by an assortment of server farms that are ordinarily introduced with hundreds to thousands of hosts. At the System-Level layer, there exist monstrous physical assets (stockpiling servers and application servers) that power the server farms. These servers are straightforwardly overseen by the more significant level virtualization administrations and tool boxes that permit sharing of their ability among virtual examples of servers. These VMs are separated from one another, along these lines making issue tolerant conduct and disengaged security setting conceivable. Usually, every segment will run on an alternate VM, which can be facilitated in server farms possessed by various Cloud registering suppliers.

Enhancement Identification Performer

A basic arbitrary method is utilized to pick flat-aligned heuristic from the valley of follower. By far examination, the excellent and unique time period for the pair of Sim SA-Annealing Sim-Anneal Algo & Gen-Algo would follow to enhance outputs at beginning recursions (example, < 300 recursion), yet this is important to enhance the throughput at ending recursions (example, > 900 recursion), particularly while the lookup path coincide to a mere count of path.

This methodology merely helps to identify if the proposal given by H_i , can be enhanced or no more.

Divergence Identification Performer

A arbitrarily picked flat aligned-LLH is a group oriented design PBHA, the diversity identification performer is utilized by Hyp-HSA to conclude "time spot" to modify the flat aligned heuristic design. The divergence of the calculated proposal is utilized as an avalanche point. The dissimilarity of the present arrangement is registered as the normal of the assignment removes between singular arrangements which are characterized as below: Let's assume a job in two distinct request is assigned to the same VirMac, the job contact is 0: else, the job contact is 1.

Disruption Performer

Along with the disruption operators of picked flat aligned Heuristic (LLH), the given design disrupt the proposals produced by flat aligned heuristic ahead of proposals are given on to the brand new picked flat heuristic. The follower proposals initiated by the flat aligned heuristic is disrupted by giving a distinct heat ambience/temperature to each request to equalize the intensification as well as classification of the lookup. The make term of the jobs ran are computed and the throughput is examined.

6. System Flow on CloudSimulator

CloudSimulator is an exhaustive SIM kit that provides modelling, reproduction and testing of Cloud system and system providing settings. CloudSimulator is

utilized to build a DC data centre with a pack of VMs as the system resources.

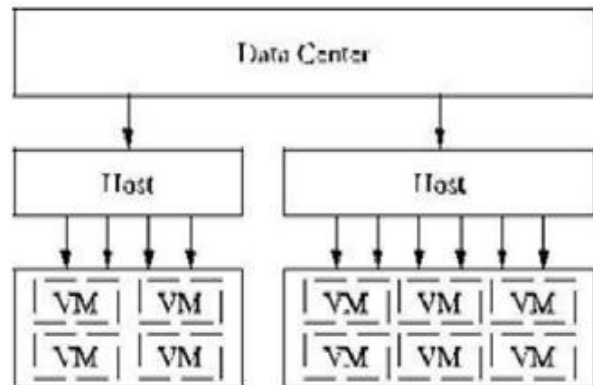


Diagram I: VMs in CloudSimulator

```

Initialising...
Created Host: org.cloudsim.cloudsim.Host@f5b418
Created Host ID: 0
Created Host: org.cloudsim.cloudsim.Host@1b4b5ff
Created Host ID: 1
Created Host: org.cloudsim.cloudsim.Host@1187f60
Created Host ID: 2
Created Host: org.cloudsim.cloudsim.Host@152a23e
Created Host ID: 3
Created DC: Createdcenter@159ect7
Broker call
VM-Configurations
VM Count: 6
vm1ips: 909.0
vm2ips: 306.0
vm3ips: 258.0
vm4ips: 534.0
vm5ips: 487.0
vm6ips: 356.0
Starting CloudSim version 3.0
DataCenter is starting...
Broker is starting...
Entities started.
0.0: Broker: Cloud Resource List received with 1 resource(s)
Process Resource
Create VMs:
VMList: out 6
VMList: 6
0.0: Broker: Trying to Create VM #0 in DataCenter
VMList: 6
0.0: Broker: Trying to Create VM #1 in DataCenter
VMList: 6
0.0: Broker: Trying to Create VM #2 in DataCenter
VMList: 6
0.0: Broker: Trying to Create VM #3 in DataCenter
VMList: 6

```

Diagram II: System Flow on CloudSimulator

Reproduction (SIMUL) Output of System Flow Planning

Group-dependent heuristic design PSwarmOpt, AntColOpt the Lookup path conclude in nearly 600 recursions. Hyp-HSA concludes quicker than the alternative heuristic designs, and it generally requires less than 250 iterations. Besides, as Hyp-HSA can explicitly find the appropriate LLH.

Let's approach, the distinction among maximum-min and alternative heuristic planning design are higher than five. The output lookup operation of these

scheduling design conclude to a deterministic state highly faster on occasions of the file is small in size. A better illustration is the output of AntColOpt and Hyp-HSA, which displays that the output at recursion 55 is highly appropriate to the output at recursion 105. Yet the output lookup operation of AntColOpt and Hyp-HSA can yet determine a good output behind recursion 105, denoting that the heuristic scheduling design yet has a probability to determine a good output at final recursions when the file/data set is huge in size.

Design	Arguments
SimAnn	Ambience t=11 Ambience lessen t r=0.7
AntColOpt	Phupgrading factorp=0.11 Setting probability g 0=0.9701 relevant impact mass= 2
PSwarOpt	Inert mass m=0.71
Hyp-HSA	Maximum recursion of flat-aligned design maximum=55 un-enhanced recursion avalanche m1=7

Diagram III: Make term for every recurrence

Besides, depending on the stimulation of the combination of these scheduling design, it has quickly understood their throughput. For minimal sized file/data sets, the confluence rate of AntColOpt and Hyp-HSA defined are often approximated to one another. Still, as the n0 of jobs raises, the confluence rates of AntColOpt and Hyp-HSA. Hyp-HSA has a enough possibility to determine a good output than that of AntColOpt as it continuously determines a good output behind the AntColOpt has reached a stable state.

Board 2: Reproduction outputs of System Flow Planning

DS(Fil e)	Maxim um- Min	SAnn	PSwarm Opt	AntCol Opt	Hyp- HSA
e- Econo mic parm	1.51.71 .6	2.12.6 5.18	2.02.62. 6	2.52.62 .6	2.62.6 2.5
e- Protei n parm	3.63.63 .4	2.83.8 2.25	2.73.82. 7	3.83.82 .8	3.83.8 3.9

7. Conclusion

This paper exhibits an enormous uphold hyper-heuristic calculation to discover better booking answers for distributed computing frameworks. The submitted calculation require few location administrators to naturally decide on to alter low-level-heuristic (LLH) calculation and an annoyance administrator to adjust the arrangements acquired by individual low-level-calculation to additionally

enhance booking brings about conditions of make term. As the re-enactment output appear, the submitted calculation utilizes numerous pursuit bearings at every emphasis during the union procedure, in this way a higher opportunity to locate a superior outcome.

It won't simply give favored results over the standard rule based arranging counts. In like manner, the re-sanctioning outcomes implies further that the concluded estimation concentrate quicker than the other heuristic figurings take a gander at right now by far most of the educational assortments. In a word, the essential theme of submitted hyper-heuristic(HH) calculation is to previlage of the characteristics of all of low-levels-computations meanwhile not-extending count time, by running one and only one low-level estimation at each accentuation. This-process is generally not exactly equivalent to the alleged cream heuristic computation, which executes multiple times than one low-level figuring individual accentuation, appropriately including an any more drawn out count time.

Later on, target will be on discovering progressively productive location administrators and annoyance strategy to improve the presentation of the proposed calculation. It can likewise endeavour to actualize Hyp- HSA to various examination areas.

Acknowledgment

I offer our thanks to our darling PRINCIPAL, **Dr. D. DHANASEKARAN** for allowing authorization to embrace the venture. I am additionally grateful to him for his significant direction entirely through the course.

I stretch out our gave appreciation to our adored HEAD OF THE DEPARTMENT, **Dr. S.P. CHOKKALINGAM** for his predictable consolation.

We are profoundly obligated to our CO-ORDINATOR, **Dr. JSYBI CYNTHIA** for his inspiration, direction and significant proposals to do our venture and his reliable support over the span of our task work.

References

- [1] Chun-Wei Tsai and Wei-Cheng Huang (2014), "A Hyper-Heuristic Scheduling Algorithm for cloud", IEEE Transactions on cloud computing, Vol. 2, No. 2, April-June 2014.
- [2] Shaobin Zhan and Hongying Huo (2012), "Improved PSO-Based Task Scheduling Algorithm in Cloud Computing", Journal of information and computational science, November 1.
- [3] Rubing Duan, Radu Prodan, and Xiaorong Li (2014), "Multi-Objective Theoretic Scheduling of Bag-of-Tasks Workflows on Hybrid Clouds", IEEE Transactions on cloud computing, Vol. 2, No. 1, January-March.
- [4] Xiaomin Zhu, Laurence T Yang and Huangke Chen (2014), "Real-time tasks oriented Energy-Aware Scheduling in Virtualized Clouds", IEEE Transaction on cloud

- computing, Vol. 2, No. 2.
- [5] Lizheng Guo and Shuguang Zhao (2012), "Task Scheduling Optimization in Cloud Computing based on Heuristic Algorithm", *Journal of networks*, Vol. 7, No. 3.
 - [6] Hamid Mohammad Fard, Radu Prodan, and Thomas Fahringer (2013), "A Truthful Dynamic Workflow Scheduling Mechanism for Commercial Multi-cloud Environments", *IEEE Transactions on parallel and distributed systems*.
 - [7] Radley, S., Sybi, C.J. and Premkumar, K., 2019. Multi Information Amount Movement Aware-Routing in FANET: Flying Ad-hoc Networks. *Mobile Networks and Applications*, pp.1-13.
 - [8] Qinghai Bai (2012), "Analysis of Particle Swarm Optimization Algorithm", *Computer and Information science*, Vol. 3, No. 1.
 - [9] Saeed Javanmardi and Mohammad Shojafar (2014), "Hybrid Job Scheduling Algorithm for Cloud Computing Environment", Springer-Verlag Berlin Heidelberg.