

Improving Clever Chatbot for Web Analytics

S.K.Senthil Kumar¹, Mani Rathnam P², Mathanabharathi A³, Dhamodharan P⁴, Manikhandan N⁵
Department of Computer Science and Engineering
V.S.B Engineering College, Karur, Tamil Nadu, India – 639111
sksenthilkumar1974@gmail.com

Article Info

Volume 82

Page Number: 8942 - 8945

Publication Issue:

January-February 2020

Article History

Article Received: 18 May 2019

Revised: 14 July 2019

Accepted: 22 December 2019

Publication: 09 February 2020

Abstract:

This paper portrays the utilization of Chatbots in the field of business. The essential idea is about improved web analytical. It is one of the predefined systems to improve the web examination process. This basic accomplishment is used in business organization, since web examination brings swarm towards the market. A stateless Chatbot approaches every discourse just as it was a partner with another customer. Curiously, a stateful Chatbot can review past associations and edge new responses in the setting. Adding a Chatbot to a company's organization or arrangements division requires low or no coding; today, different Chatbot expert communities that empower architects to manufacture conversational customer interfaces for outcast business applications. Nowadays, Chatbots are comprehensively used basically for a business reason.

Keywords: Chatbots, business applications.

I. INTRODUCTION:

Visit bots are planned to robotize and streamline correspondence with customers, giving fast responses moreover, improving the customer experience through a very much arranged, conversational interface. One of the typical usages of Chatbots is first-level Customer Support. The inspiration driving Client Abirami (2018) et al gives a layout of cloud-based Chat bots advancements close by the programming of Chatbots and challenges of programming in the present and future Era of Chatbot. Rajiv (2018) et al give the arrangement of a Chatbot, which gives a profitable and exact reaction for any inquiry in perspective on the dataset of FAQs using Artificial Intelligence Markup Language (AIML) and Inert Semantic Analysis (LSA). An organization based and general inquiries like welcome/welcome and a general request will be responded using AIML what's progressive, other organization based inquiries uses LSA to give responses at whatever point that will serve

customer satisfaction. This Chatbot can be used by any College to answer FAQs to curious understudies in a wise style.

Meenakshi (2018) et al Chatbots in engaging dialogical correspondence request for the logical examination intends to respond a for referenced issue by applying different leveled bunch examination on a great deal of the movement business goals around Malang city, Malang routine, and Batu city in light of AGNES (Agglomerative Nesting) count. The result, by then, is fed into the Chat bots database. This Chatbot will assist guests with getting information on which possible districts they need to visit in a perfect world in case they are under limited opening time prerequisites.

II. PROPOSED WORK:

Visit the bot in a particular field of expertise. This work showed in this paper expands the learning base of a standard Chatbot past its neighbourhood learning base to external data source Wikipedia.

This has been cultivated by using Media Wiki Programming interface to recoup information from Wikipedia when the Chatbots neighbourhood database does not contain the reaction to a customer question. To make the discourse with Chatbot progressively significant as for the client's past visit sessions, a customer unequivocal session limit has been added to the Chatbot building. An open source AIML electronic Chatbot has been balanced and redone for the usage in prosperity informatics region. The Chatbot has been named VDMS - Virtual Diabetes Management Framework. It is required to be used by the general system besides, diabetic patients for diabetes preparing and the administrators.

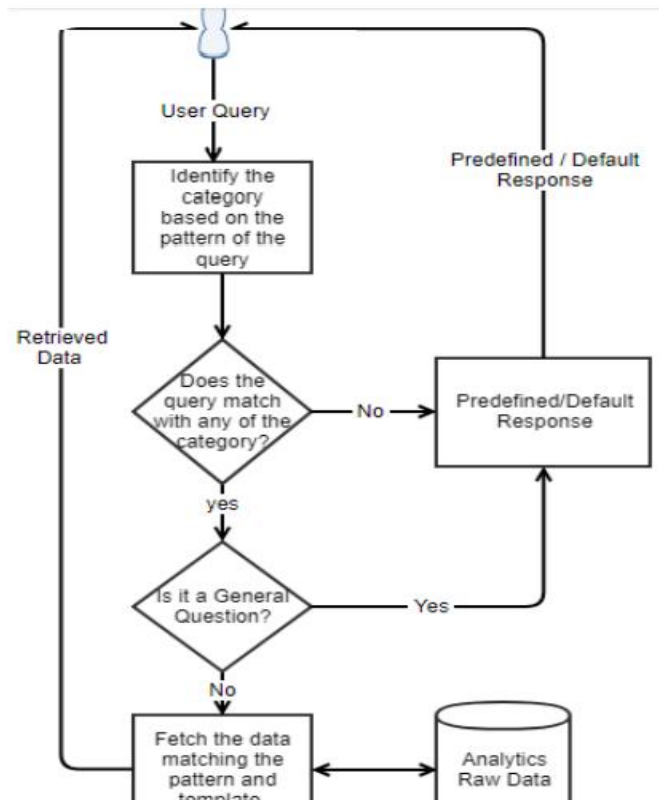
CHOI H(2018) ET AL Current electric machines give various abilities to make clients; lives logically pleasant additionally, gainful. In any case, thing headings have advanced toward getting to be mistaken for the growing number of limits and the customers put aside a long chance to see each electric machine. To handle this issue, we propose a shrewd thing direction system using a Chatbot. A Chatbot is a structure that performs astute visits with the customers through advising applications, e.g., Slack, Facebook separation, LINE, and others. Customers can utilize their favored interfaces to perceive how to use electric machines by bantering the system.

As referenced before, Chatbots are utilized to improve web examination ponders. In the proposed work, the fundamental employment is to see if the yield is gotten in a normal premise.

Situation 1: Domain Related Query If the question is area related, at that point the Chatbot will associate with the information source for example Examination crude information to get the ideal information. The information once recovered from the database is then appeared to the bot-client.

Situation 2: General Queries-Queries that fall under general classification is "The manner by which are you", "What is your name" and so on. Such expected general questions will have their separate predefined reactions as layouts.

Situation 3: None of the abovementioned If the inquiry composed in by the bot-client does not fall



under any of the known classifications, a default reaction like "Invalid Query" is sent back to the bot-client.

III. RESULT ANALYSIS:

These days, everything is changed over on the web. From reviving telephones to purchasing an item. By and large, talking about the business system to get by in this time, it is obligatory to have an individual online nearness and asset, similar to a site, and to realize how well they are performing in the web. Precise business bits of knowledge can make supernatural occurrences pretty much without fail. Business Insights are profoundly essential to make progress in showcasing. There are different web investigation apparatuses accessible in the market. The web

logical instrument tracks the site client execution in their individual sites. Notwithstanding, using these instruments and drawing the best bits of knowledge perhaps tedious and monotonous procedure. To fix the above hindrance, I am proposing a cunning Chatbot which can be utilized to remove business bits of knowledge at similarly higher speed and precision. In addition, the bot is to utilize neighbourly. The Chatbot is progressively broad with the goal that it can react to basic welcome and discussions. This Chatbot is made utilizing an XML tongue named Artificial Intelligence Mark-up Language (AIML). AIML is utilized for making characteristic language programming operators. The required information is brought from the examination device's crude information. The idea is made exceptionally straightforward. The crude information comprises of all following subtleties made by each site client. In this paper, I will utilize two kinds of clients to be specific bot-client and site client. Bot-clients are the ordinary clients for whom the visit bot is made. Site clients are the clients of the site wherein the bot-clients need to know the exhibition and preparing.

IV. REFERENCES:

1. A.Ramya, et al, "Efficient Central Keyword Based Search Method over Encrypted Data in Cloud", International Journal of Engineering Research in Computer Science and Engineering (IJERCSE) , ISSN (Online) 2394-2320, Vol 5, Issue 3, March 2018
2. Abirami S, et al, "Predictive Energy Saving In Search Engine Using Query Processing", International Journal of Engineering Research in Computer Science and Engineering (IJERCSE) , ISSN (Online) 2394-2320, Vol 5, Issue 3, March 2018
3. Bhavanidevi.D, et al, "SUPERMAN: Security Using Pre-Existing Routing for Mobile Ad hoc Networks" International Journal of Engineering Research in Computer Science and Engineering (IJERCSE) , ISSN (Online) 2394-2320, Vol 5, Issue 3, March 2018
4. Dr.R.Thendral, et al, "A Cloud based bus alert system for navigation of blind people", International Journal of Engineering Research in Computer Science and Engineering (IJERCSE) , ISSN (Online) 2394-2320, Vol 5, Issue 3, March 2018
5. Dr.R.Thendral, et al, "Video Dehazing and Defogging Method Using Multiscale Guided Filter", International Journal of Engineering Research in Computer Science and Engineering (IJERCSE) , ISSN (Online) 2394-2320, Vol 5, Issue 3, March 2018
6. J. Rajiv Kumar, et al, "Information Secure Over Unauthorized Attack In Cloud Environment", International Journal of Engineering Research in Computer Science and Engineering (IJERCSE), ISSN (Online) 2394-2320, Vol 5, Issue 3, March 2018
7. K.Santhiya, et al, "Human Body Sensor Health Monitoring System in the Fusion of Iot and Cloud Computing", International Journal of Engineering Research in Computer Science and Engineering (IJERCSE) , ISSN (Online) 2394-2320, Vol 5, Issue 3, March 2018
8. K.Saranya, et al, "Automatic Vehicle Accident Detection System", International Journal of Engineering Research in Computer Science and Engineering (IJERCSE) , ISSN (Online) 2394-2320, Vol 5, Issue 3, March 2018
9. Keerthana R, et al, "Distributed Data Transfer for Disaster Using Cloud Computing Infrastructure International Journal of Engineering Research in Computer Science and Engineering (IJERCSE)", ISSN (Online) 2394-2320, Vol 5, Issue 3, March 2018
10. M.Maharasi, et al, "Removal Of Duplicate Storage Of Encrypted Data In Cloud Computing Environment", International Journal of Engineering Research in Computer Science and Engineering (IJERCSE), ISSN (Online) 2394-2320, Vol 5, Issue 3, March 2018
11. M.Parthiban, et al, "Improving Data Encryption using Fine Grained Access Control and Semantic Keyword Search over cloud Storage", International Journal of Engineering Research in Computer Science and Engineering (IJERCSE) , ISSN (Online) 2394-2320, Vol 5, Issue 3, March 2018

12. M.Parthiban, et al, "RBPDMC- Rock Burst Prediction Model using Data Mining Classification", Journal of Applied Science and Computations(JASC), ISSN NO: 1076-5131, Volume VI, Issue V, May/2019, Page No:185
13. M.Parthiban, et al, "RFDFCP - Improving Search Rank Fraud Detection Using Finer Cluster Process", Journal of Applied Science and Computations (JASC), ISSN NO: 1076-5131, Volume VI, Issue V, May/2019, Page No:185
14. M.Parthiban, et al, "TOP SCORER - Improving user data and information access on Android application using Search based Algorithms", International Journal of Engineering Research in Computer Science and Engineering (IJERCSE), , ISSN (Online) 2394-2320, Vol 5, Issue 3, March 2018
15. Parthiban Mohandas, et al, "Improved K-Means With Fuzzy-Genetic Algorithm For Outlier Detection In Multi-Dimensional Databases", International Journal of Pure and Applied Mathematics, ISSN: 1314-3395, Volume 118 No. 20 2018, 3911-3916
16. Parthiban Mohandas, et al, "Power Consumption In Smart Home Using Raspberry Pi", International Journal of Pure and Applied Mathematics, ISSN: 1314-3395, Volume 118 No. 20 2018, 3911-3916.
17. Prabakaran.S, et al, "Web of Things Based Student Tracking Monitoring System", International Journal of Engineering Research in Computer Science and Engineering (IJERCSE) , ISSN (Online) 2394-2320, Vol 5, Issue 3, March 2018
18. R. Vinoth, et al, "Data Integrity Checking in Dynamic Cloud", International Journal of Engineering Research in Computer Science and Engineering (IJERCSE) , ISSN (Online) 2394-2320, Vol 5, Issue 3, March 2018
19. Shobana M, et al, "Social Network based disaster analysis using user trust behavior model", International Journal of Engineering Research in Computer Science and Engineering (IJERCSE), ISSN (Online) 2394-2320, Vol 5, Issue 3, March 2018
20. Vignesh Dhandapani, et al, "Plant Health Monitoring Using Digital Image Processing", International Journal of Engineering Research in Computer Science and Engineering (IJERCSE),

ISSN (Online) 2394-2320, Vol 5, Issue 3, March 2018.